



BRIGHTiNTEL

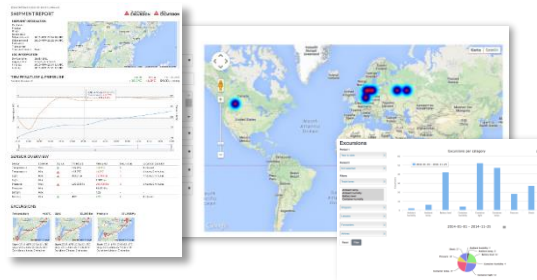
Technical Sheet

Gain product shipment insight. Anytime. Anywhere.

BRIGHTiNTEL provides you with operational and strategic shipment insights that can help to reduce transport-related risks and to further enhance your operations through:

- connected sensors attached directly to the product or asset being shipped
- in-transit shipment reporting and notification services
- dashboard and analytic services providing deeper aggregated shipment-related intelligence

The platform is configurable and open to any sensor, or data logger format, thereby securing you with a flexible and future-proof solution. As your requirements and hardware evolve with e.g. added sensor capabilities, improved power management, etc., BRIGHTiNTEL evolves with it.



BRIGHTiNTEL platform specifications

System	Web-based platform where clients can customize the interface through branding and administer multi-layer organizations with feature-based users and user groups.
Notification services	Notifications based on event rules communicated through web application, E-mail and/or SMS.
Reporting services	Live interactive reports containing historic and recent sensor data including charts and maps. Geofence and excursion highlights with timestamps and maps. PDF conversion included.
Analytic services	Multi-level KPI Dashboards, Trade lane analysis, Excursion analysis, Heat maps with drill down features to zoom in on specific shipments and shipment-related events or excursions.
Supported shipment data for analytics	Product excursion thresholds, Geofences templates, Order Data, Order value, Product and Batch name/no., Transport Data; Carrier, Forwarder, WaybillID, Transport mode, Costs etc.
Integration interfaces	Sensor data web service connector interface, Order data web service connector interface.

Examples of sensor data loggers connected to BRIGHTINTEL

Transport mode					
Logger type	Last-mile temperature logger for chilled or frozen temperature monitoring	Fixed vehicle-mounted temperature logger	Global transportation logger with automatic FlightSafe mode	Multi-sensor logger with external BLE sensors	Long-life battery data logger
Sensors	GPS Temperature Motion/Vibration	GPS Temperature Door opening Alarm button Motion/Vibration CAN-Bus	GPS Temperature Light Humidity Shock Pressure	GPS Temperature Light Relative humidity Shock Motion Free fall Door open	Temperature Relative humidity Shock Vibration
Features	Mobile battery-powered logger to monitor GPS positions and temperature data during home delivery/ad-hoc shipments.	Complete logger for vehicle-related data in refrigerated/regular transports. Expandable with CAN-bus data.	Battery-powered logger to monitor multiple sensor input. Can be used during air transportation thanks to automatic flight safe mode.	A battery-powered communication logger connecting to external sensors wirelessly via BLE (Bluetooth Smart).	Stand-alone data loggers that can be configured according to required sensors, e.g. temperature/humidity/shock/vibration.
Typical applications	Last-mile temperature-controlled transports.	Refrigerated truck/trailer transports.	Regional and global high-sensitive/high-value transports.	Regional/global high-value transports.	Long distance transports with no live data requirements.
Data comm.	GPRS	GPRS	GPRS	GPRS	USB
Power supply	Rechargeable Lithium battery	Vehicle power supply with rechargeable Lithium battery back-up	Rechargeable Lithium battery	Rechargeable Lithium battery	Replaceable battery
Battery life ²	≈ 2400 data transmissions	∞ - External power	≈ 11 days + 11 days w extended battery	≈ 8 weeks	≈ 1 year

¹The list of loggers and capabilities are changing over time in line with continuous hardware development.

²The battery lifetime is highly dependent on transmission interval, ambient temperature and GPS/GSM coverage

About us

We believe that the automated collection, visualization and processing of data from connected devices such as containers, vehicles and products during transportation contribute to more qualitative, effective and profitable operations for our customers.

By not only automatically and continuously monitoring products and assets, but also structuring and analysing the collected data, our solution BRIGHTINTEL helps our customers to meet increased demands and to understand how products and assets are handled during transport.

Headquarters:
Starbright Consulting AB
Gjuterigatan 9
SE-553 Jönköping, Sweden

Uppsala office:
Starbright Consulting AB
Entrance D, Uppsala Castle
Uppsala, Sweden

10 years of global shipment experience



on all transportation modes



with 10000+ monitored shipments